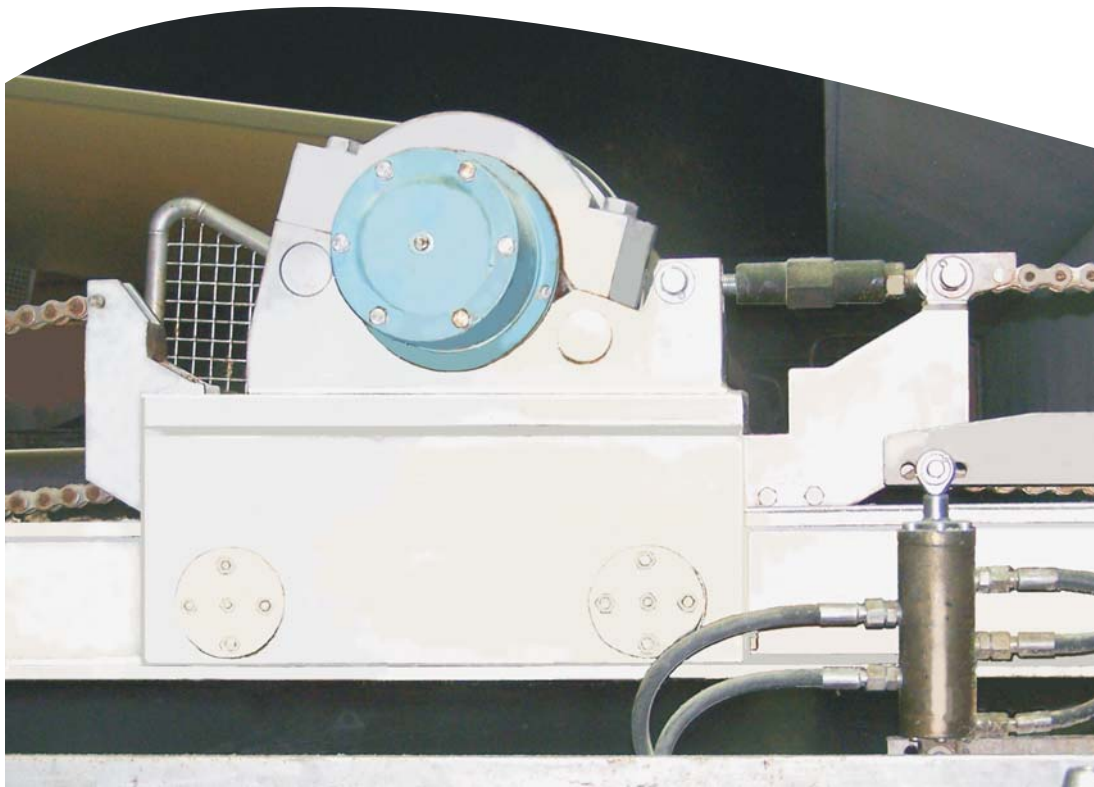


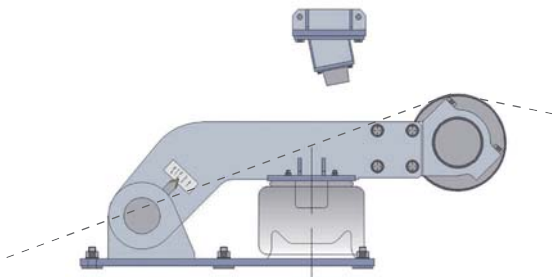
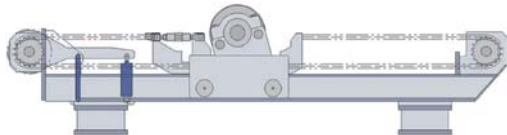
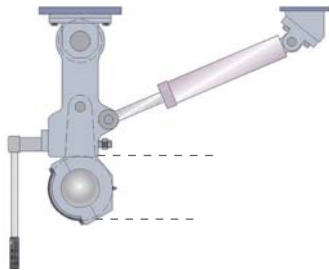
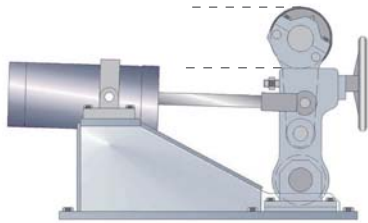
INVO[®] Tensioner

UMV tensioners for reliable and safe operation



UMV constant tension

UMV felt- & wire tensioners gives you reliable and safe operation. They are also designed for easy installation and problem free maintenance. The material choice are made with the functionality in focus, due to its design with moving parts in brass and stainless/acid proof steel.



Felt- & wire tensioner type FWT10

- Pneumatic cylinder operated, high temperatur sealings
- Individual adjustment in one side
- Complete delivery consists of tensioner including control cabinet and instructions for installation
- Made of mild steel, painted

Felt- & wire tensioner type FWT15

- Hydraulic cylinder operated
- Individual adjustment in one side
- Connection to existing or new hydraulic power pack
- Complete delivery consists of tensioner including control cabinet and instructions for installation
- Made of mild steel, painted or stainless/acid proof steel

Felt- & wire tensioner type FWT20

- Automatic constant tension control
- Hydraulically operated
- Reliable, no electronics
- Felt tension/wire can be read an adjusted from control panel
- Individual adjustment in both sides
- Connection delivery consists of tensioner, hydraulic valve cabinet and instructions for installation
- As standard, delivered in painted mild steel, optional in stainless/acid proof steel

Wire tensioner type WT20

For installation in fourdrinier sections

- Constant tension type
- Pneumatic bellows operated
- The tensioner can on request be designed for foot mounted pillow blocks
- Complete delivery consists of tensioner including control cabinet and instructions for installation
- Made of stainless/acid proof steel

Remark:

Wire or felt leading roll can be quoted separately, as well as doctor with support.

UMV Coating Systems AB

PO Box 162, SE-661 24 Säffle, Sweden, Tel: +46 522 982 80, Fax: +46 522 983 23, info@umv.mattsson.se

www.umv.mattsson.se

A company within

